

The Internet: Finding What You Need

- Dennis E. Slice (dslice@fsu.edu)
- Gordon Erlebacher (modifications)

Objectives

- Online resources – e.g., journals, professional society sites.
- Literature searches and citation management.
- Examine Google and its various searching capabilities
- Some alternatives to Google

Internet: The Ultimate Tool

- What kind of information:
 - books
 - research articles (pdf, txt)
 - research facts (text, video, images)
 - general knowledge (Wikipedia, ...)
 - help on various subjects
 - propaganda and utter nonsense

Approaches

- Search engines (Google, Bing, etc.)
- Databases (data, articles, images, videos)
- Blogs (individual experiences and opinion)
- Forums (discussion groups, mailing lists)
- Chat rooms (interactive conversations)

Library Resources

Journals

- <http://www.fsu.edu>
 - Search “Library”
- <http://www.google.com>
 - Search “Library fsu”
- Search journals (once library found)
 - Social Science
 - Psychology



Library Resources

Databases

- Articles and Databases
 - Most Used Databases
 - ✓ Web of Science
 - Faculty: Janet Kistner
 - Kistner Janet
 - Berler E*
 - ...find the article.
 - Your favorite psych. prof or subject...

Library Resources

What to Do with What You Find

- <http://www.lib.fsu.edu/>
 - Citation Management
 - ✓ Zotero (Firefox, standalone)
 - Risky business...in-class install
 - Back to Web of Science
 - Save Kistner citations
 - Share with others

Search Engines

- http://en.wikipedia.org/wiki/Category:Internet_search_engines
- List of search engines
 - http://en.wikipedia.org/wiki/List_of_search_engines
- 2010 list of search engines
 - <http://www.thesearchenginelist.com/>

How to choose a search tool?

What engine to use?

- Depending on the specific task, certain engines are better than others:
 - boolean logic (and/or/not and combinations)
 - restrict to certain file types
 - specify that search words are near each other in text
 - Many more specialized needs:
 - ✓ <http://www.submitawebsite.com/articles/about-search.aspx>

Google

- www.google.com
 - Feeling lucky?, etc.
 - Psychology (page layout), web
 - ✓ Images (layout, size, color, face)
 - ✓ News (time)
 - ✓ Videos, etc.

Google

Advanced Searches

- G. Boole
- Boolean Algebra
- How to use Boolean logic

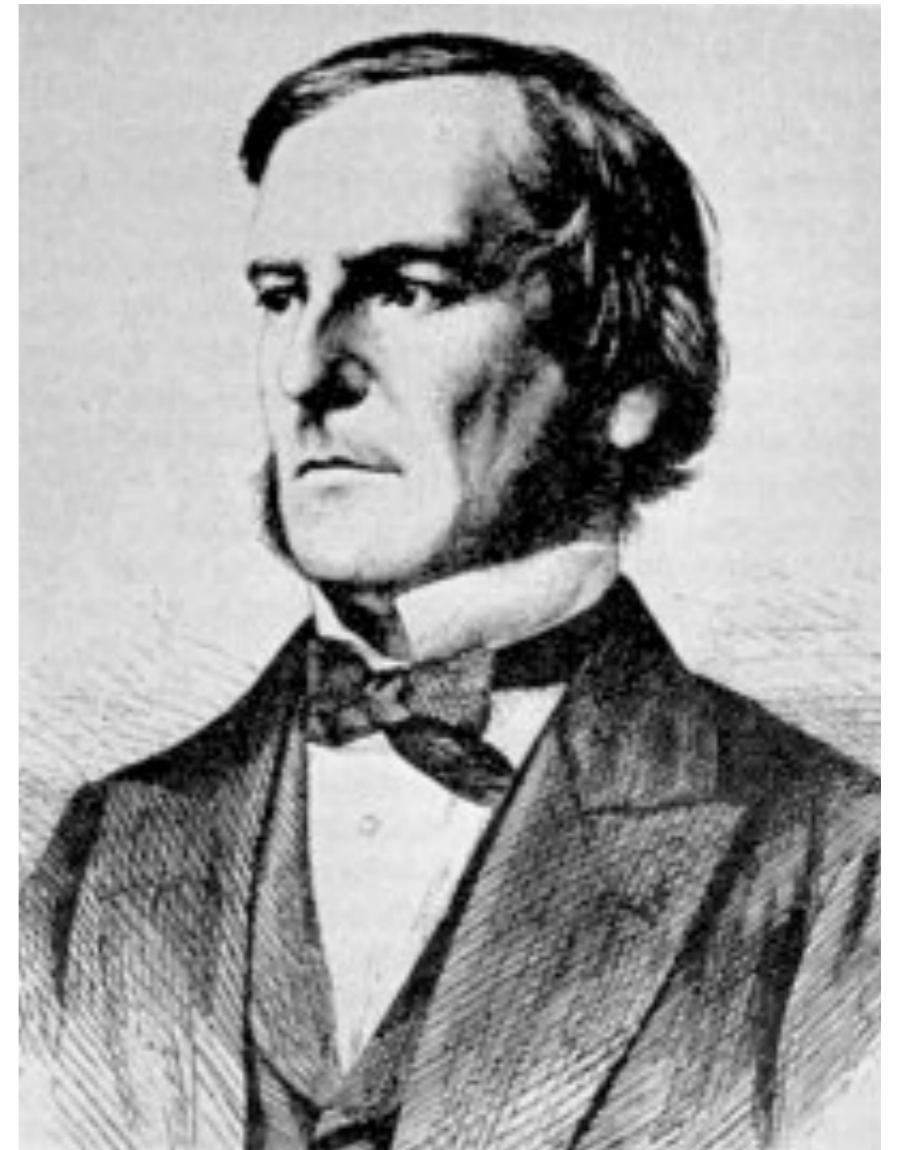
Boolean Logic



WIKIPEDIA
The Free Encyclopedia

George Boole (/'bu:l/; 2 November 1815 – 8 December 1864) was an English mathematician, philosopher and logician. His work was in the fields of differential equations and algebraic logic, and he is now best known as the author of *The Laws of Thought*. As the inventor of the prototype of what is now called Boolean logic, which became the basis of the modern digital computer, Boole is regarded in hindsight as a founder of the field of computer science. Boole said,

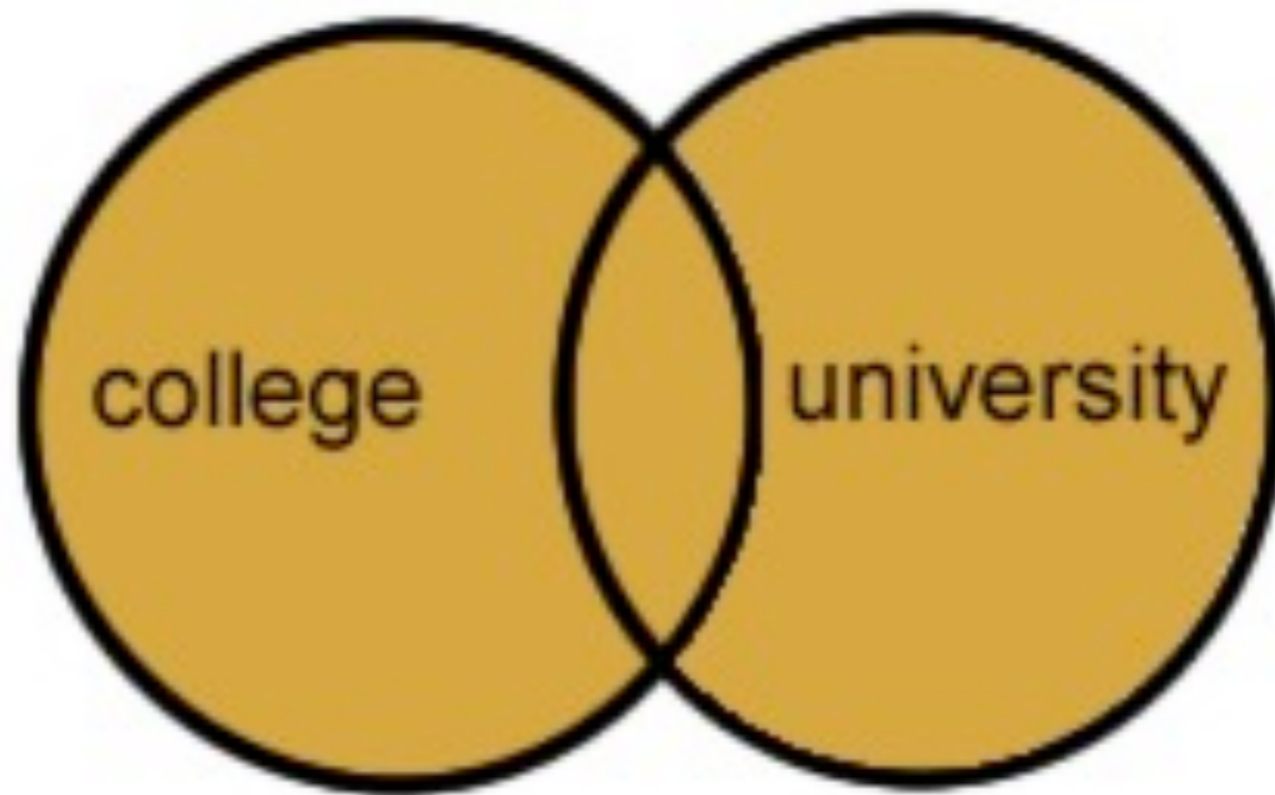
... no general method for the solution of questions in the theory of probabilities can be established which does not explicitly recognise ... those universal laws of thought which are the basis of all reasoning ...[1]



Boolean: OR

(<http://www.internettutorials.net/boolean.asp>)

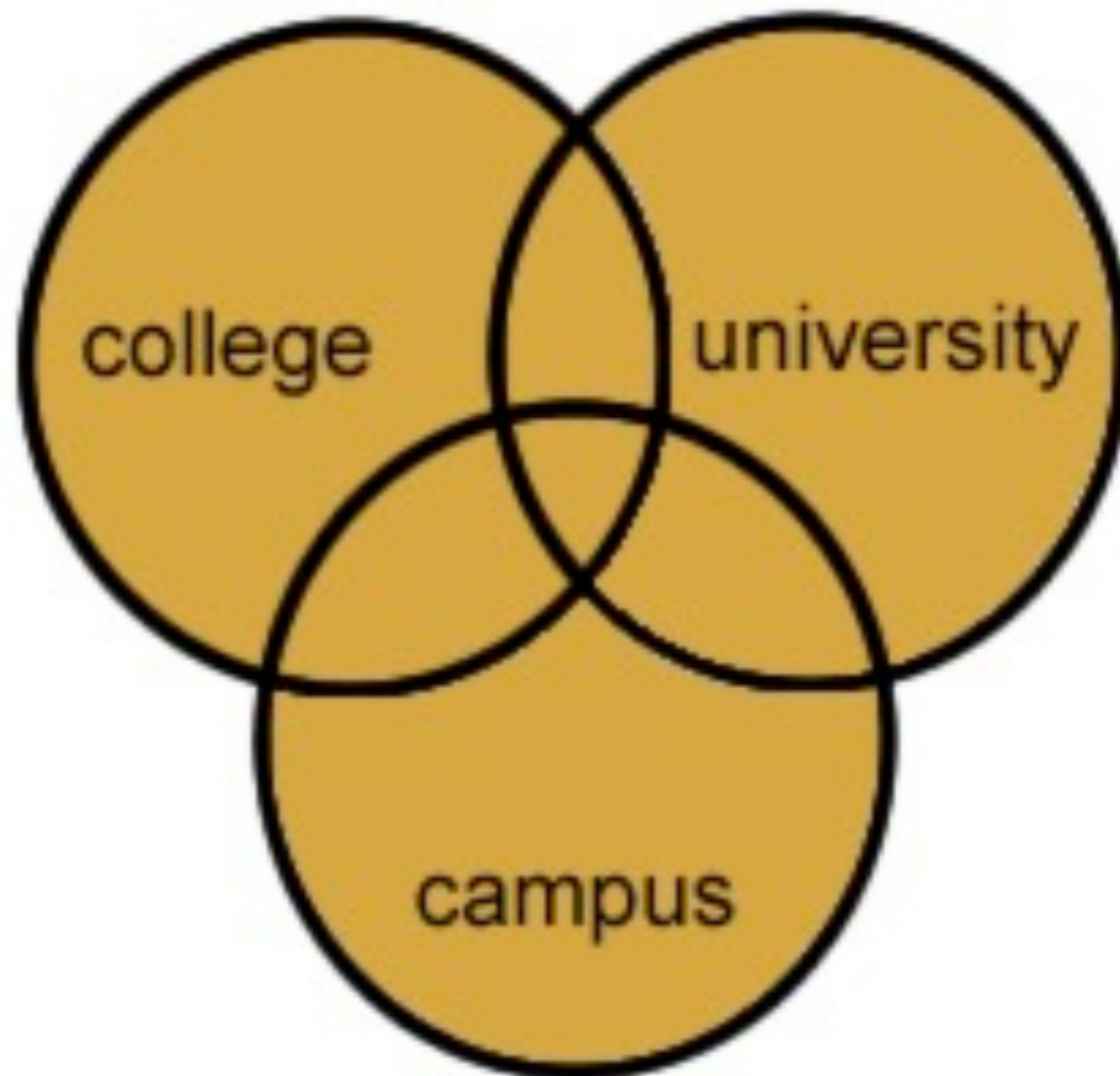
college OR university



Boolean: OR

(<http://www.internettutorials.net/boolean.asp>)

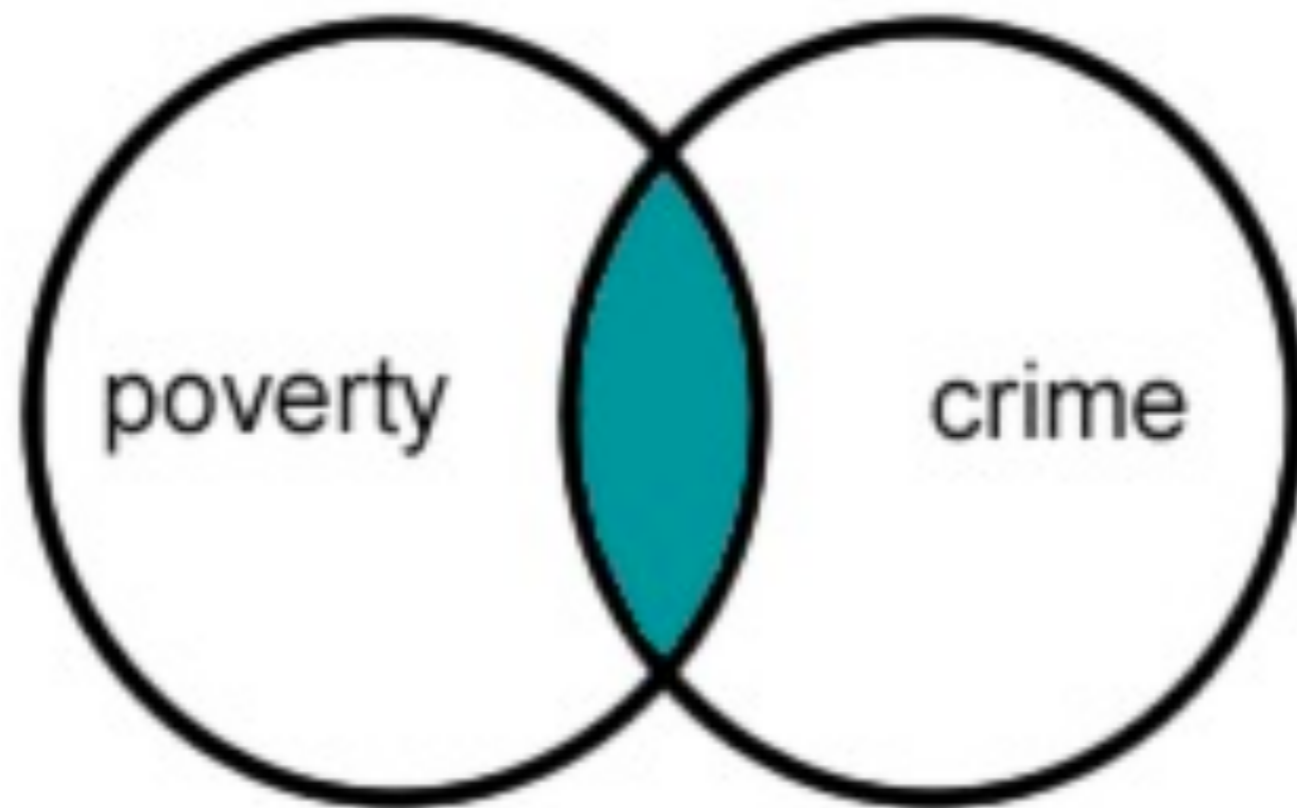
college OR university OR campus



Boolean:AND

(<http://www.internettutorials.net/boolean.asp>)

poverty AND crime



Boolean:AND

(<http://www.internettutorials.net/boolean.asp>)

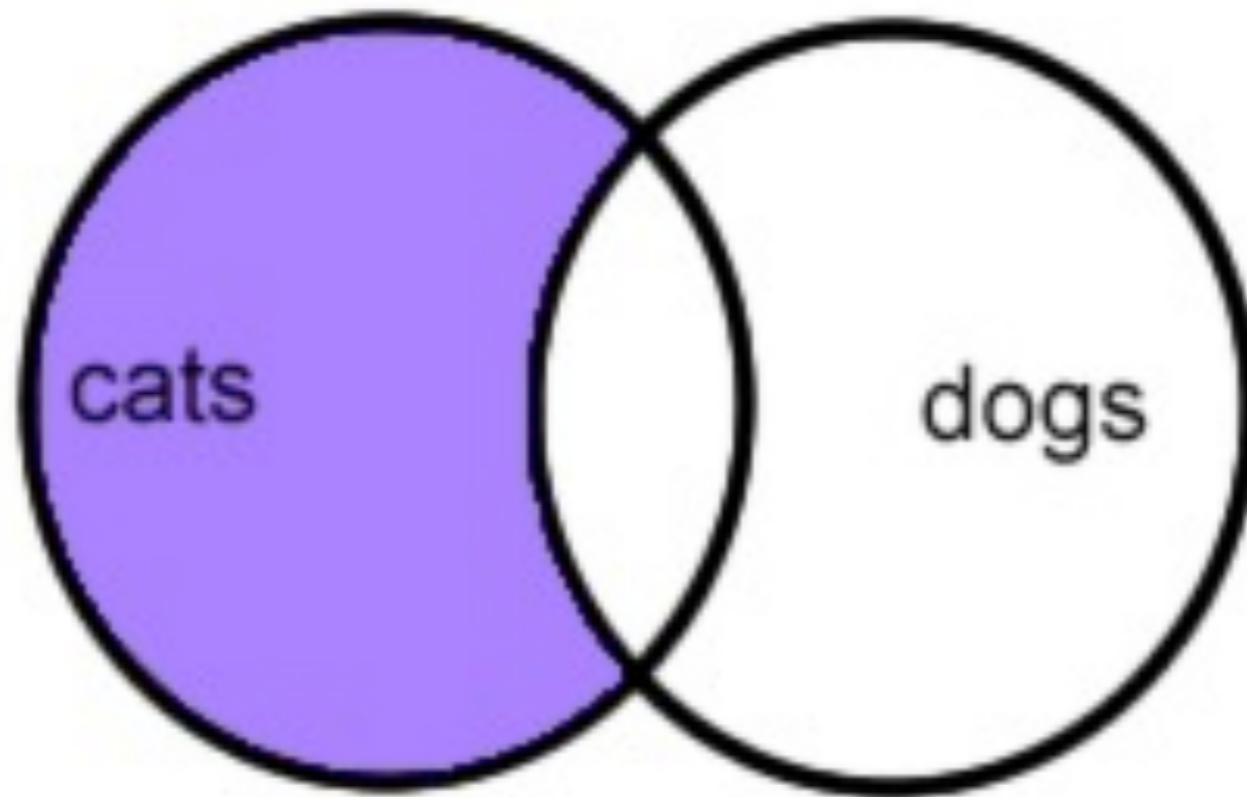
poverty AND crime AND gender



Boolean: NOT

(<http://www.internettutorials.net/boolean.asp>)

cats NOT dogs



Google

Boolean Searches

- psychology AND clinical → psychology
clinical
- psychology OR clinical → psychology OR
clinical
- psychology NOT clinical → psychology -
clinical

Features

Feature Chart
SEs by Feature
News Searches
Directories
Phone Numbers
Others

Reviews

Google
Yahoo! Search
Live.com
Exalead
Ask

News / Blog

Blog
Email Lists
Alerts

Analysis

Size
Freshness
Inconsistencies
And more

Learn

On the Net
columns
Search
Strategies
Books on
Searching

Search News

[The 'New Bing': Now Searching With Facebook](#)

Interested in the New Bing and unable to see it or would you just like a quick overview, now that it is supposed to be available to all U.S. users? See my NewsBreak on the New Bing. While the...

Dated Jun 7, 2012 in Bing | Social Search - [[#permalink](#)]

[Google Scholar Update in Progress](#)

Google Scholar has announced an update that brings Scholar more in line with other Google properties. Google Scholar is still not linked from the main Google page, but now (if you are getting the new look which is still...

Dated May 21, 2012 in Google - [[#permalink](#)]

[More Punctuation Searching at Google](#)

Somehow I missed the announcement last month from Google which included a note that Google has started indexing more punctuation marks. Based on this announcement, it looks like we can start searching with all of the following (some of...

Dated May 14, 2012 in Google - [[#permalink](#)]

[In-Depth Bing Relaunch Overview](#)

If like me you are not yet seeing all the new Bing features (or if you are outside the U.S. where they have not yet been introduced), Danny provides an excellent and in-depth overview with his Bing Relaunches, Features...

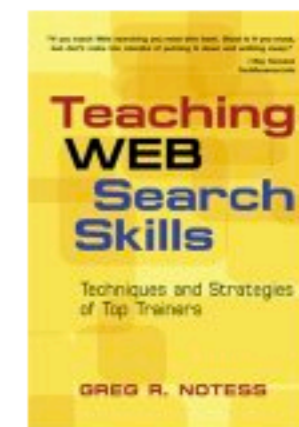
 [Subscribe](#)

Features

Archive Sources
Bookmarklets
Book Searching
Custom Engines
Search Switching

Google

Review
Components
Unindexed URLs



Now Available!

Book Ads

Extreme Searchers
Super Searchers
Google
The Search

 [del.icio.us](#)

 [Furl It](#)

Search Engine Features

Separate Page: <http://www.searchengineshowdown.com/features/>

Languages Page including Language Limits, Online Translation, and Translated Search Title Searching Showdown Page
[byfeature.shtml](http://www.searchengineshowdown.com/features/byfeature.shtml)

Supported Features:

Boolean - Proximity - Truncation - Case - Fields - Limits - File Types - Stop Words - Family Filters

Defaults:

Default AND: Ask, Exalead, Gigablast, Google, Live Search, Yahoo! Search

Default OR: None

Boolean Capabilities and Constraints:

AND, OR, nesting: Exalead, Gigablast, Live Search, Yahoo! Search

NOT: Exalead, Live Search, Yahoo! Search

AND NOT: Gigablast, Yahoo! Search

OR and - only: Ask, Google

Operators must be in UPPER CASE: All

Dash - for NOT: Ask, Exalead, Gigablast, Google, Live Search, Yahoo! Search

Proximity

Phrase Search: Ask, Exalead, Gigablast, Google, Live Search, Yahoo! Search

NEAR: Exalead

NEAR/#: Exalead (replace # with a number to specific distance of proximity)

Truncation & Stemming:

Google Quotes

- **psychology clinical**
- **clinical psychology** (different from previous)
- **“clinical psychology”** (exact phrase)
- **“psychology clinical”** (exact phrase)
- **psychol** (exact word or synonym)
- **“psychol”** (exact word)

File type

- on Google:
 - `psychology filetype:pdf`
 - will only search for pdf files

Ignore a file type

- Everything except pdf files:
 - `psychology -filetype:pdf`
- Everything except pdf and ppt files:
 - `psychology -filetype:pdf -filetype:ppt`

Ignore a file type

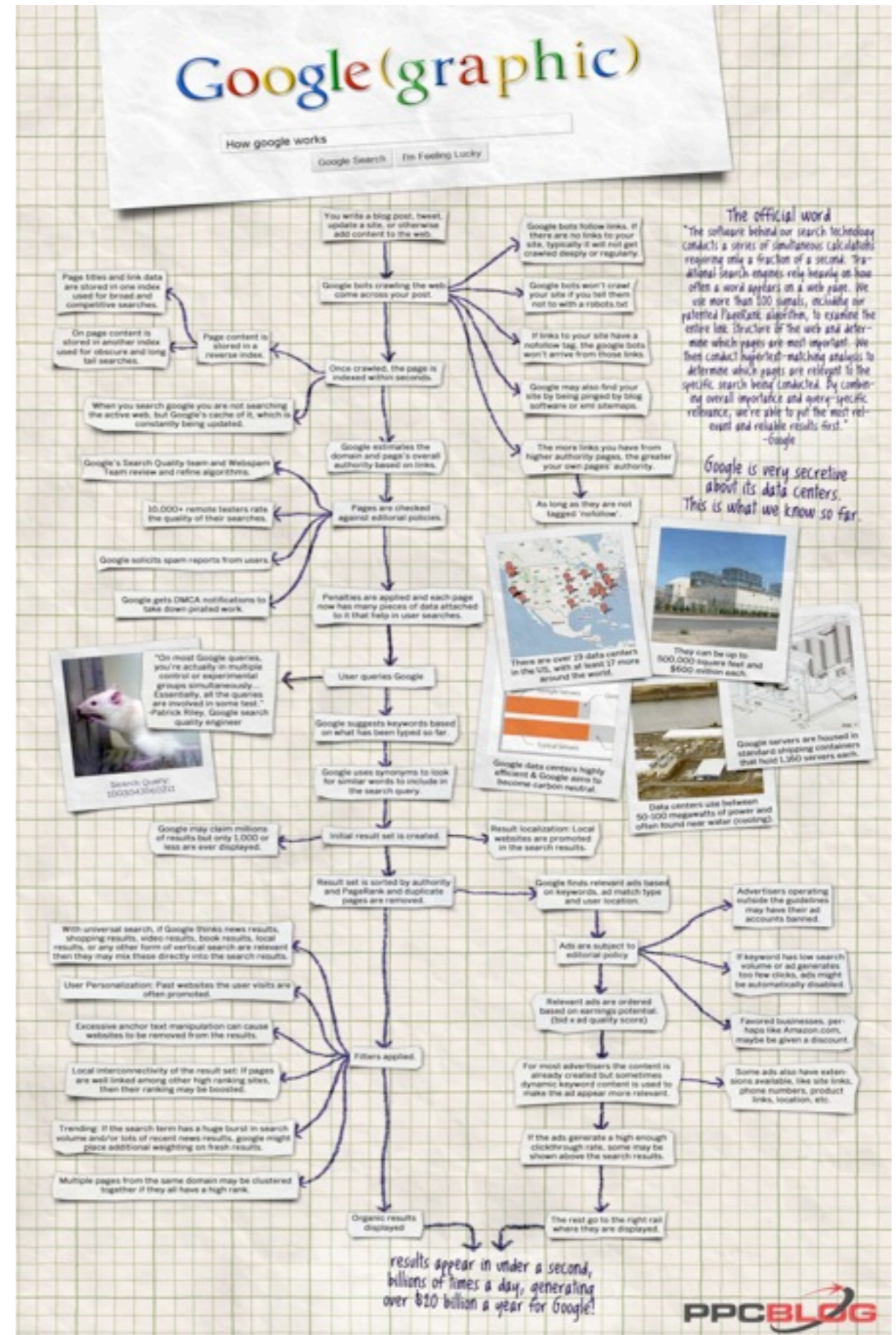
- forensic psychology
- “forensic psychology”
- “forensic psychology” filetype:pdf
- “forensic psychology” -filetype:pdf

Google Site Search

- psychology forum
- depression site:thepsychologyforum.com
- Psychology at fsu:
psychology site:www.fsu.edu

How does Google work?

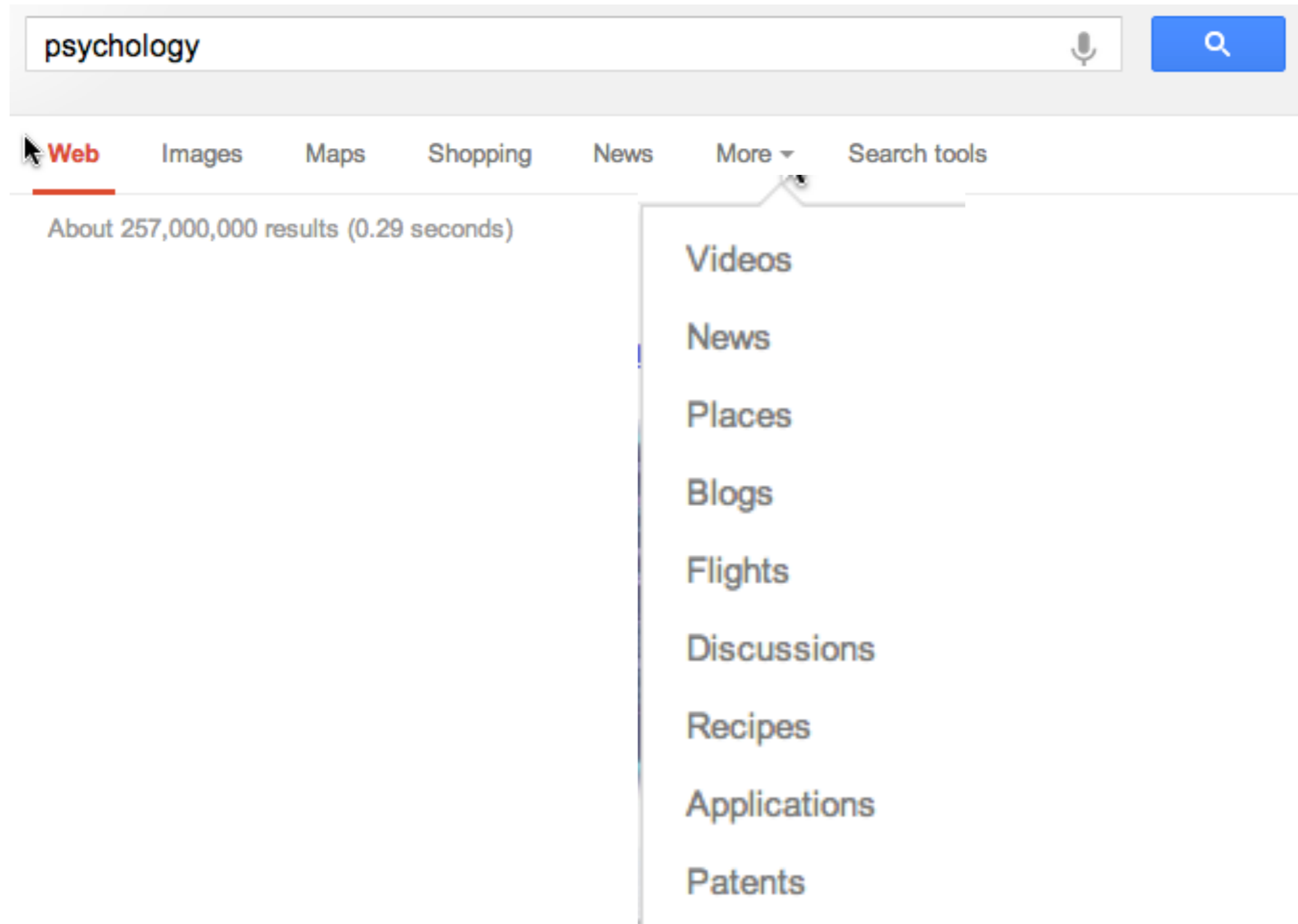
<http://ppcblog.com/how-google-works/>



Google Scholar

- Janet Kistner

Additional Google Features



More features

Search tools

Any time ▾

All results ▾

Any size ▾

Any color ▾

Any type ▾

Standard view ▾

blender

Web

Images

Maps

Shopping

News

More ▾

Search tools

20 personal results. 85,900,000 other results.

blender tutorials

Web

Images

Maps

Shopping

More

Search tools

Any time

All results

Tallahassee, FL

Blender

en.wikiboo

Jump to [Mi](#)

some exter

You visited

blender.

www.blenc

Blender Tu

page is ma

[Getting Sta](#)

- ✓ All results
- Sites with images
- Related searches
- Visited pages
- Not yet visited
- Dictionary
- Reading level

[open books for an open v](#)

o

, mostly **tutorials** that could be i

y, but are of little ...

ing list of the **Blender Tutorials!**

Andrew Price. If you would ...

[aine](#)

Any time

Reading level

Clear

Results by reading level for **blender tutorials**:



Search Engines Prehistory,

- <http://www.monash.com/spidap3.html>
 - Excite
 - Alta Vista
 - Infoseek
 - Lycos
 -
- They have been *gobbled* up by Google!

Finding people

- Many search engines
- Can do in-depth searches at cost
 - e.g., background checking
 - e.g., mugshots.com

"finding people"

[Find People - Instantly - 1\) Enter Name - Search Free](#)

www.peoplesmart.com/

2) Get Phone, Address, Email & More

[People Search by ZabaSearch - Free People Search Engine](#)

www.zabasearch.com/

Zabasearch's free people search engine includes public records, whitepages, U.S. addresses, phone numbers and more. Find people for free using ...

[ZabaSearch Advanced](#) - [Free Search Menu](#) - [White Pages](#) - [Reverse Phone Lookup](#)

[Cyndi's List - Finding Living People](#)

www.cyndislist.com/finding-people

More than 325000 links! 323000 links, categorized & cross-referenced, in more than categories. Another 1800+ uncategorized new links in the works.

[Finding People - LexisNexis](#)

<https://law.lexisnexis.com/infopro/zimmermans/disp.aspx?z...>

A cheap way to start a "people search" is just to Google their names; you can back up by searching one or more of the other resources in the Search ...

[Yahoo! Search - Web Search](#)

[www.yahoo.com/](#)

Google Alternatives

- Gigablast (<http://www.gigablast.com>)
- Bing (<http://www.bing.com>)
- Yahoo (<http://www.yahoo.com>)
- DuckDuckGo.com (good for languages)
- What else? Let's ask google!

Gigablast

- Similar to Google
- Very sophisticated boolean logic
 - AND, NOT, OR
 - <http://www.gigablast.com/help.html>
- Gives direct access to Bing and Google

Page 1

"how many calories in chocolate mousse?"



Examples Random

Favorites

History

Preferences

Downloads

Uploads

Account

Related Queries

- = coffee consumption...
- = target heart rate f...
- = heart attack statis...
- = gestation period of...

Input interpretation:

mousse	amount	1 cup	total calories
	type	chocolate prepared-from-recipe	

Result:

909 Cal (dietary Calories)

Unit conversions:

More

3.8 MJ (megajoules)

3.8×10^6 J (joules)

3.8×10^{13} ergs
(unit officially deprecated)

910 kcal_{th} (thermochemical kilocalories)
(unit officially deprecated)

910 kcal_{IT} (kilocalories (International Steam Table 1956))
(unit officially deprecated)

Comparison to reference daily intake:

	daily amount	% daily value

ramalpha.com/input/sources.jsp?sources=ExpandedFoodData

Photo databases

- Too many to mention:
- Main ones:
 - Picasa (<http://picasa.google.com/>)
 - Flickr (<http://www.flickr.com/>)

Photo repository



Your photostream pro 443 items / 412 views

[Slideshow](#)     [Share](#)

[Collections](#) [Sets](#) [Galleries](#) [Tags](#) [People](#) [Archives](#) [Favorites](#) [Popular](#) [Profile](#)



IMG_6250

[Click here to add a description](#)

©  Anyone can see this photo ([edit](#))

Uploaded on [Apr 19, 2011](#) | [Delete](#)

3 views / 0 comments



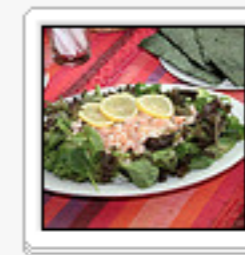
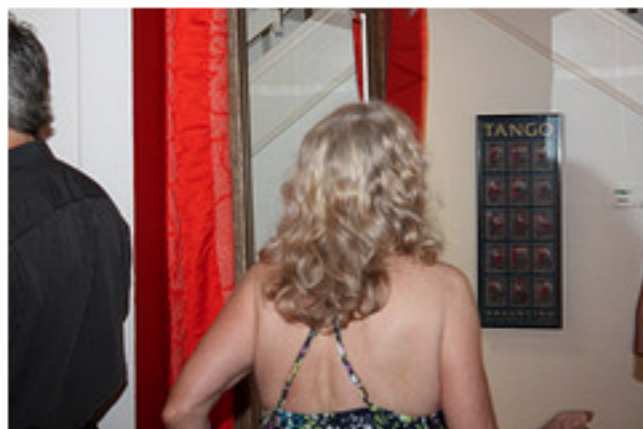
IMG_6249

[Click here to add a description](#)

©  Anyone can see this photo ([edit](#))

Uploaded on [Apr 19, 2011](#) | [Delete](#)

2 views / 0 comments



[dance for japan](#)

12 photos

1 view

([edit set](#))



[daniela_encanto_milonga_2010](#)

57 photos

([edit set](#))

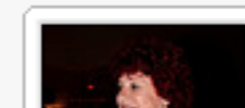


[barbecue_with_mimi_june_2010](#)

42 photos

66 views

([edit set](#))



[encanto_mimi_2010](#)

20 photos

Search for Metadata

Search

[Photos](#) | [Groups](#) | [People](#)

Everyone's Uploads

canon rebel

SEARCH

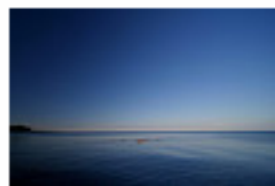
[Full Text](#) | [Tags Only](#)
[Advanced Search](#)

Sort: [Relevant](#) | [Recent](#) | [Interesting](#)

View: [Small](#) | [Medium](#) | [Detail](#) | [Slideshow](#)



From Legend...



From The...



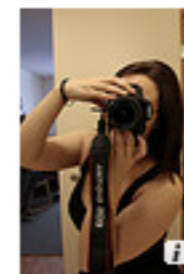
From americana...



From Nostaw21



From Doctorlo



From alb6450



From deependst...



From linkdelig...



From DaDaAce



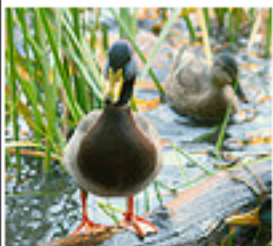
From visualkre...



From Rafael Saes



From STEEZYSLOTH



From Ducklover...



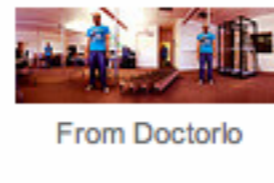
From kristin...



From Mayur...



From au tum n.



From Doctorlo



From Alexander...

Groups

- Canon DSLR User Group**
106,399 members | 1,978,918 photos
- canon photography**
53,257 members | 2,344,780 photos

Photographers

- thisisbossi** - Washington, DC, USA
[See related photos](#)
- Matt Hays**
[See related photos](#)

Tag Clusters

- Photos with tags like **sunset, nature, clouds**
- Photos with tags like **night, sky and**

Looking to license a photo?

Looking to license an image? You can find it through the treasure trove of Flickr's Creative Commons Program, or enroll in the Getty Images Program.

Links to Data Sets and Repositories

Data Sets

A wealth of shared data are available for use in psychological science research. These data span a wide variety of topics. Below are examples of electronically available behavioral and social science data.

[National Institute of Child Health and Human Development Study of Early Child Care and Youth Development](#)

Data and documentation for phases I and II of the NICHD-SECCYD study. Access to the data set requires application and IRB approval.

[National Institute on Alcohol Abuse and Alcoholism Alcohol Use and Consumption Tables](#)

A large number of html and text files on alcohol use and consumption.

[Health and Retirement Study](#)

A longitudinal study of health, retirement, and aging. User registration required.

[The fMRI Data Center](#) at Dartmouth University. A site dedicated to increasing access to brain imaging data.

[National Longitudinal Study of Adolescent Health](#) at the University of North Carolina, Chapel Hill.

[National Election Studies](#)

These are databases primarily related to election activity from 1948 through the present. Simple registration is required.

[Census Data](#)

An introductory link to the many tables that are available.

[Human Mortality Database](#) provides detailed mortality and population data to researchers, students, journalists, policy analysts, and others interested in the history of human longevity.

One repository of datasets relevant to Psychology